

# USDA APHIS Animal Care Emergency Programs Update



**SAVING PETS  
SAVES LIVES**

USAHA CAEM  
Kevin M. Dennison, DVM  
10-1-11



# AC Role in Emergency Management



## Statutory:

- Assessment of regulated facilities  
Zoos, research, commercial kennels, transportation
- Program Response Team (PRT) for confiscations

## ESF 11

- Subject matter experts for ESF11, FEMA, States
- Supporting coordination actions (Pets MAC)
- Technical Assistance and operational assistance missions in the field, including PRT availability





# Pets mission coordination

- Working to develop a “system” with common terminology pertaining to functions & tasks.
  - Pets Coordination Unit (PCU)
    - Could be a State, Federal or joint Federal-State unit
    - Ideally would be a State-led unit with Federal support when requested
    - Could be part of a larger animal/agricultural coordination unit
  - Pets Multi-Agency Coordination Unit (Pets MAC)
    - Developing a National Pets MAC capability for very large/complex incidents or multiple concurrent large incidents.





# Program Response Team

Primary purpose: regulatory emergencies:

- Confiscation of animals under the AWA.
  - Consider 1 elephant, 300 dogs, 150 tigers
  - Confiscation in place possible
  - Potential unified command with State or local authority
- 14 people in each of two regions

Secondary purpose: Stafford Act mission

- Capability to provide ICS based team to support FEMA/States



# Zoological facility contingency planning



Zoo Animal Health Network  
contingency planning group:  
[www.zooanimalhealthnetwork.org](http://www.zooanimalhealthnetwork.org)

## Zoo emergencies 2011

- Roosevelt Park, Minot, ND
- Dakota Zoo, Bismarck, ND
- Discovery Zoo, North Platte, NE
- Zoo America, Hershey, PA



“New” Administration Bldg, Roosevelt Zoo





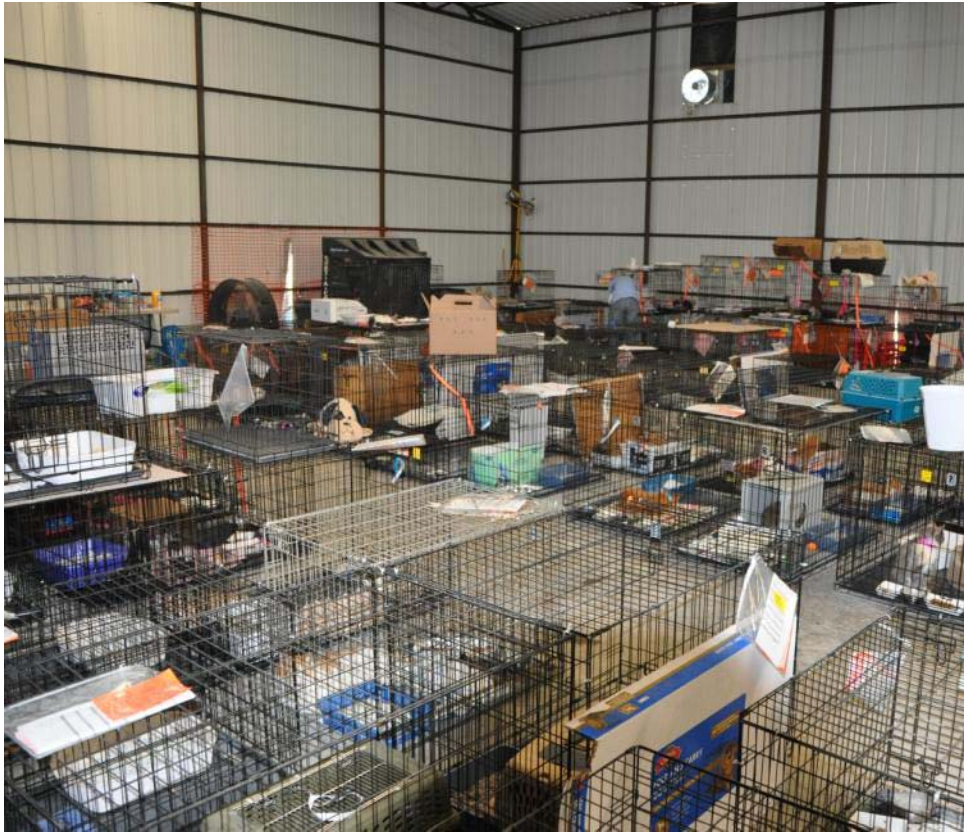
# AC deployment with FEMA IMAT



- Joplin, Missouri, May-June 2011
- FEMA Incident Management Assistance Team support
  - Monitoring pets issues for IMAT
  - Providing technical assistance to local response managers and NGOs
    - Heat index
  - Facilitated resource requests















# Best Practice Working Groups

Developed through NASAAEP with support from Iowa State

- Sheltering
- Evacuation and Transport
- Animal Search and Rescue
- Veterinary Medicine
- Decontamination
- Planning and Resource Management
- Training
- Preparedness and Outreach

BPWG Library accessible through [www.nasaaep.org](http://www.nasaaep.org)





# Intro AEM modules:

Web-based Modules	Webinar modules
Overview of Animal Emergency Management	Intro: Animal Emergency Response Missions
	Animal Emergency Missions Part II
	State/Local/Tribal Planning and Exercises
Federal Support Processes	Federal Support Processes II
	FEMA Public Assistance Overview
Safety, Hazards and Personal Protection	Safety, Hazards and Personal Protection II
	Personal Preparedness and Business Contingency Planning





# Nuclear/Radiological Update

- Japan earthquake-tsunami-radiological incident
  - APHIS radiological expert at two working sessions in Japan
  - NASAAEP Animal Decontamination Best Practice Working Group
    - Whitepaper on current status and challenges
  - FEMA IND planning group
    - 2 APHIS representatives







# Contact Information

## Dr. Allan T. Hogue

Assistant Deputy Administrator  
Riverdale, MD

[allan.t.hogue@aphis.usda.gov](mailto:allan.t.hogue@aphis.usda.gov)

301-734-7712 office  
cellular

## Ms. Anne McCann

National Emergency Programs Coordinator

[anneliese.mccann@aphis.usda.gov](mailto:anneliese.mccann@aphis.usda.gov)

Riverdale, MD  
301-734-4981  
cellular

## Dr. Kevin M. Dennison

Western Region Emergency Programs Manager

[kevin.m.dennison@aphis.usda.gov](mailto:kevin.m.dennison@aphis.usda.gov)

Fort Collins, CO  
970-494-7433 office  
970-231-3477 cellular

## Dr. Jeanie Lin

Eastern Regional Emergency Programs Manager

[jeanie.lin@aphis.usda.gov](mailto:jeanie.lin@aphis.usda.gov)

Raleigh, NC  
919.855.7097 office  
301.221.7758 cellular

