

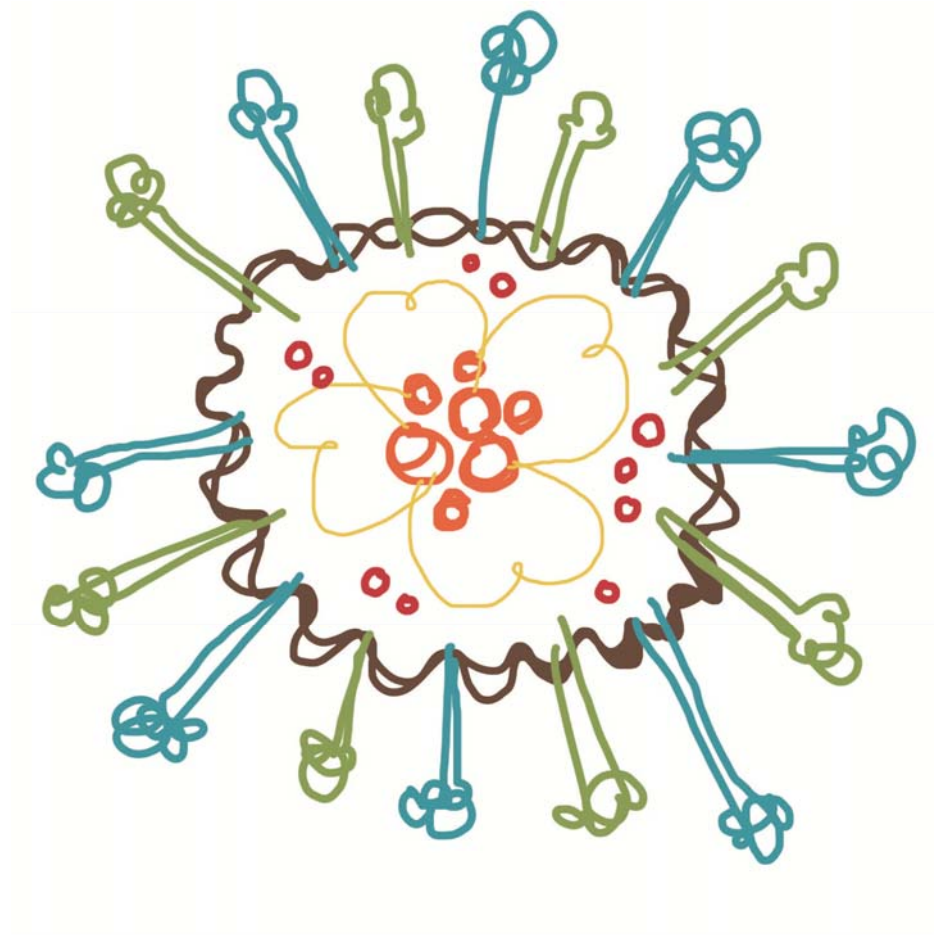
Flu at the Zoo

USAHA 2012

Yvonne Nadler DVM MPH

Yvette Johnson-Walker DVM MS PhD

Why are we *still* talking about AI?



Lincoln Park
Zoo

Tabletop!



IDPH

ASSOCIATION
OF ZOOS &
AQUARIUMS



Flu at the Zoo

- Objectives:
 - Analysis of current plans
 - USDA AZA AI OMP
 - Improve and update
 - Individual zoo preparedness
 - Increase communication across all stakeholders in a 3 State Midwest region
 - Exercise Design: plausible scenario
 - HSEEP



Exercise Structure: HSEEP

- Flu@Zoo Target Capabilities
 - ***EPIDEMIOLOGICAL SURVEILLANCE & INVESTIGATION***
 - ***FOOD & AGRICULTURE, SAFETY & DEFENSE***
 - ***ANIMAL DISEASE EMERGENCY SUPPORT***



Flu at the Zoo

- Planning team
 - Developed Facilitator questions
 - Tailored EEGs for the exercise
- Identified our evaluators
 - Steve Olson
 - Gay Miller
 - Keith Gehrand



Who was at the table?



Tabletop Agenda

AGENDA

8:30am	Registration
9:00am	Welcome & Introductions
9:15am	Presentation (<i>Agency Responsibilities</i>)
9:30am	Module 1 – Response to AI in the Region
11:15am	Module 2 – Response to AI in Free-Living Birds near Your Facility
11:45am	Working Lunch Break
1:30pm	Module 3 – Response to AI within Your Collection & Personnel
3:30pm	Player Hot Wash
4:30pm	Closing Comments & Adjourn

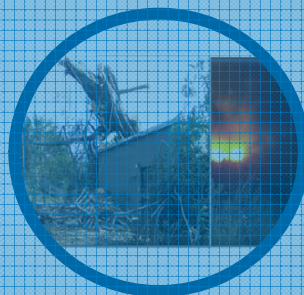
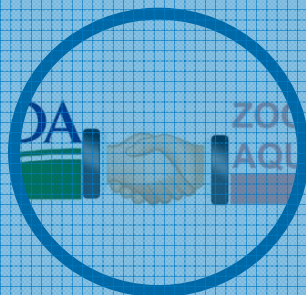
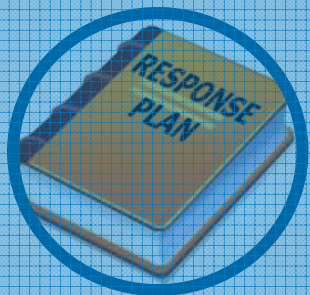




Central Florida Zoo,
2004



Witch Creek Fire,
2007



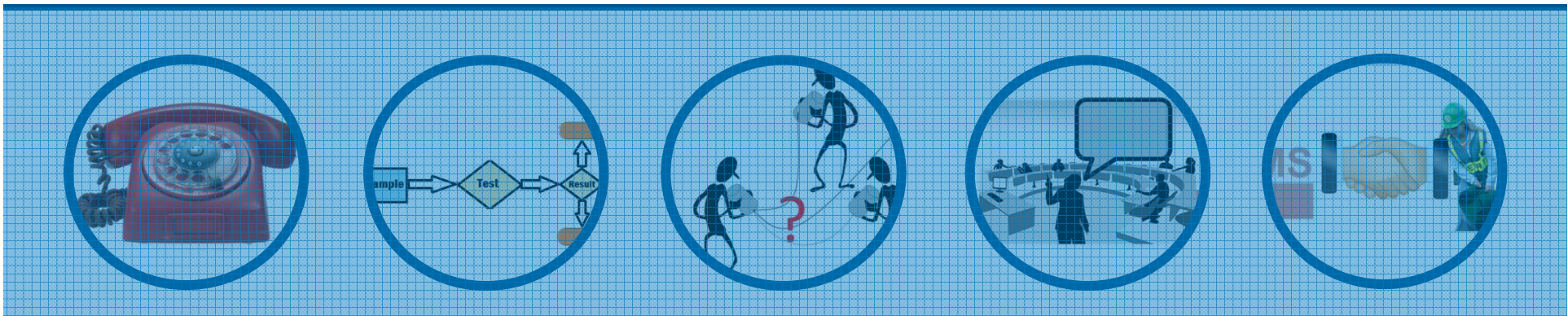
Weaknesses

ZOOS &
AQUARIUMS



ICS
Incident Command System

NIMS
National Incident
Management System





F@Z Planning Team Members

- Yvette Johnson-Walker
- San Myint
- Gene Field
- Jim Kunkle
- Steve Olson
- Anna Ruman
- Jack Herrmann
- Marilyn Ruiz
- Marty Dwyer
- Bill Brown

- Jeleen Briscoe
- Lee Myers
- Tyler McAlpin
- Darrel Styles
- Yvonne Nadler
- Jennifer Reid
- Katie Gillespie
- Marisa Hickey
- Paul Lucas
- Illinois Farm Bureau



An American flag with stars and stripes, waving in the wind, set against a dark blue background.

Flu at the Zoo
Thank you!

The AAR will be available soon!
www.zooanimalhealthnetwork.org



Zoo Best Practices: Emergency Planning Documents & Resources

Yvonne Nadler DVM MPH

Kevin Dennison DVM

The Zoo Best Practices Working Group

Contingency Plans and the Animal Welfare Act Regs



Guidance, NOT a Template



Roadmap

Goal

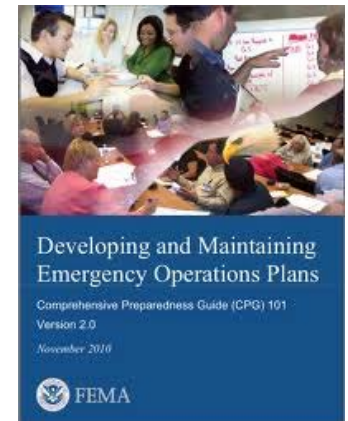
Introduction to planning
NASAAEP

Purpose

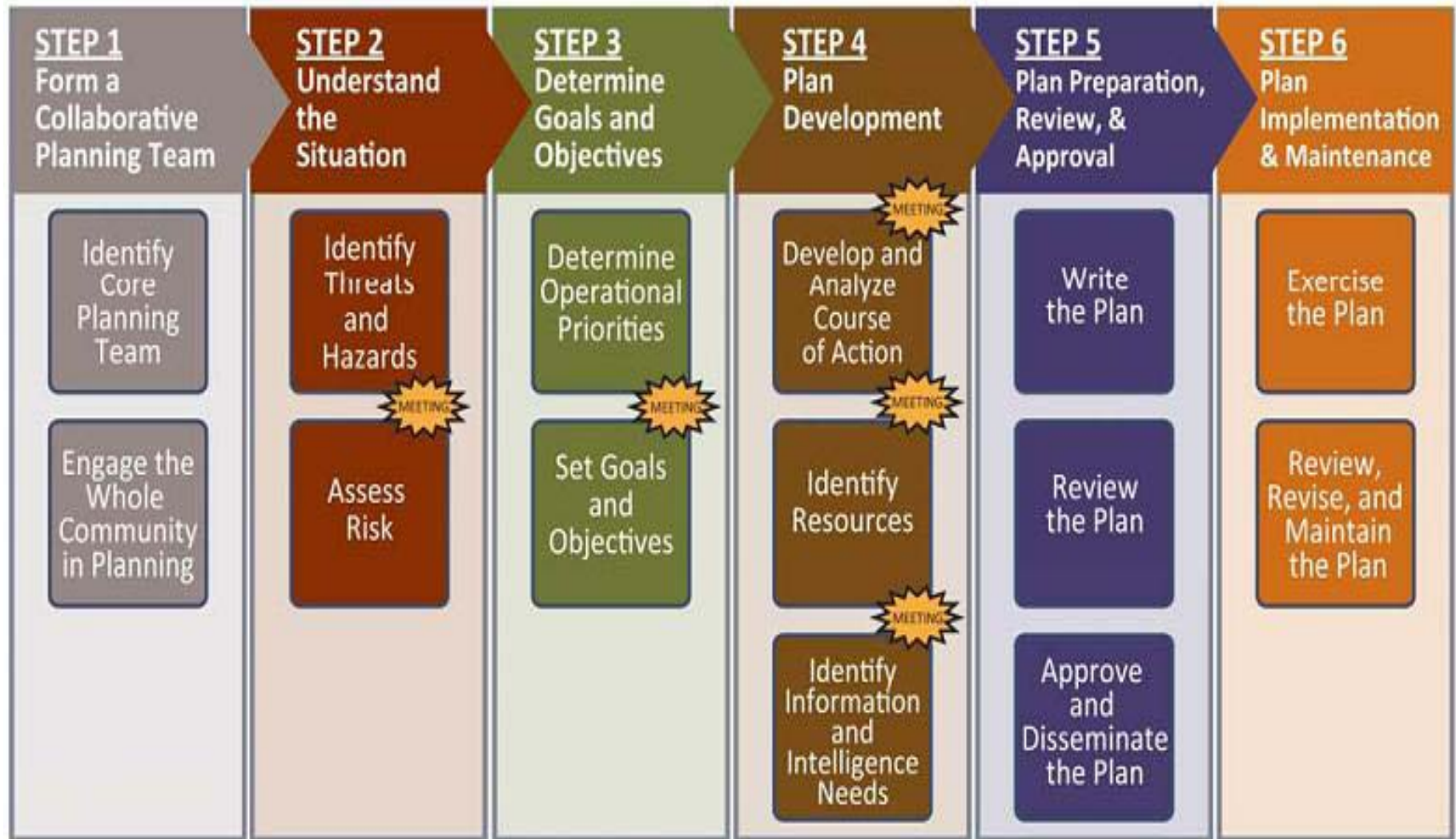
**Identify essential
stakeholders**

**Stresses cooperation with
jurisdictional Emerg Mgmt**

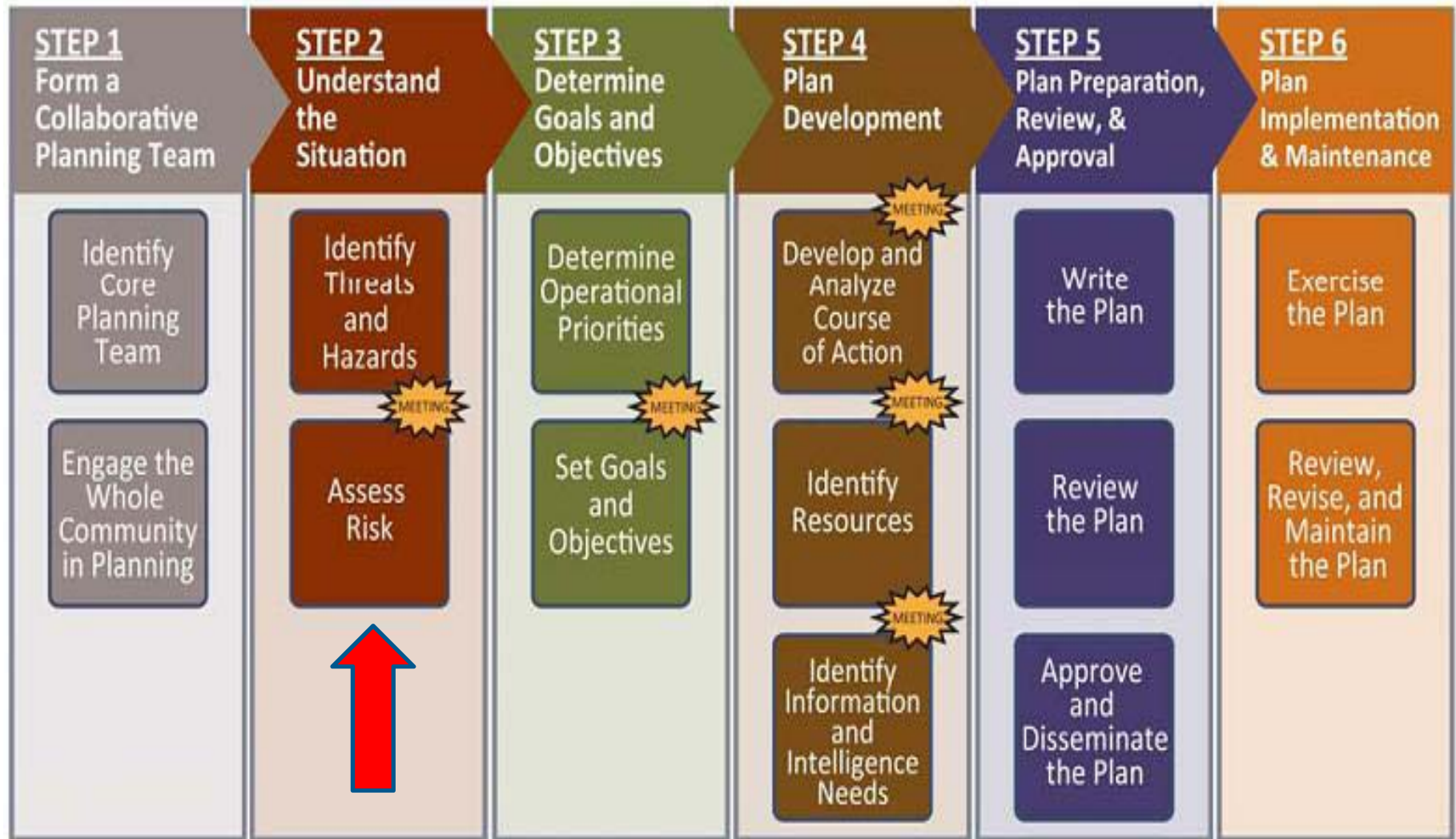
Provide links to references



Roadmap



Risk Assessment



Document Organization

‘Roadmap’ and Annexes

Risk Assessment

Communication

Administration

Data Management

Emergency Animal Care

Transportation/Evacuation

Business Continuity and Reimbursement


Facilities

MOU/MAA

Training






Animal Incident

Criminal Incident

ZBPWG 

ZOO BEST PRACTICES WORKING GROUP

**Disaster Preparedness
and Contingency Planning**

Documents for Wildlife Managers

Questions?



www.zooanimalhealthnetwork.org

ynadler@lpzoo.org